



[CLIENT]

**Body Map and Icon Design:
Project Requirements**

12.20.05

Modified 12.21.05

Modified 12.23.05



Requirement Updates

Item	Description	Date of Change
2.1.1 Template Interface	All requirements changed; please see section for details.	12/21/05
2.1.2.6 List of Illustrations	Updated body map name (added “Hormones”).	12/21/05
2.1.3 Illustration Style	Updated stylistic guidelines based on Section 3.	12/21/05
2.2.2. New Icons	Added emphasis to note that items in parentheses are suggestions only.	12/21/05
2.3 Pending Design Deliverables	Removed this section.	12/21/05
3 Body Part Specifications and Illustration Examples for Body Image Maps	Lists the organs and provides examples for each body map. [CLIENT] provided the original document. We inserted it into this requirements document and added answers to [CLIENT]’s questions (see text in yellow highlight). For shortest and longest lists and names, see pages 12-13.	12/21/05
2.1.1.4 Template Interface	Requirement for text chunking under subheads was removed.	12/23/05
Section 3, Body Map 2: Bones, Joints and Muscles	Changed groupings for clickable areas because they cannot overlap in Flash. See text in bold red.	12/23/05
Section 3, Body Map 4: Digestive System	Changed groupings for clickable areas because they cannot overlap in Flash. See text in bold red.	12/23/05
Section 3, Body Map 7: Eyes and Vision	Changed groupings for clickable areas because they cannot overlap in Flash. See text in bold red. We have included a suggestion for indicating the entire eye.	12/23/05
Section 3, Body Map 8: Immune System	Changed groupings for clickable areas because they cannot overlap in Flash. See text in bold red. We agree with [CLIENT]’s suggestion regarding the highlight areas.	12/23/05
Section 3, Body Map 9: Kidney and Urinary System	Changed groupings for clickable areas because they cannot overlap in Flash. See text in bold red.	12/23/05
Section 3, Body Map 10: Respiratory System	Changed groupings for clickable areas because they cannot overlap in Flash. See text in bold red.	12/23/05
Section 3, Body Map 11: Mouth and Teeth	Changed groupings for clickable areas because they cannot overlap in Flash.	12/23/05

	See text in bold red.	
Section 3, Body Map 12: Reproductive Female	Changed groupings for clickable areas because they cannot overlap in Flash. See text in bold red. We have included a suggestion for indicating the entire system.	12/23/05
Section 3, Body Map 13: Reproductive Male	Changed groupings for clickable areas because they cannot overlap in Flash. See text in bold red.	12/23/05
Section 3, Body Map 14: Skin, Hair and Nails	Revised suggestion for body map image	12/23/05

1 Introduction

These requirements are based on a meeting conducted with the [CLIENT] on December 16th, 2005. The design process can begin as soon as these requirements have been approved and pending design deliverables have been provided to Lucidea.

1.1 How This Document Is Organized

The remainder of this document lists the design requirements that Lucidea will follow while designing the body map template, body map illustrations, and icons.

1.2 Approval and Next Steps

Please review this document to ensure that you agree with the requirements. After we receive your signed approval, we will begin the design phase. To remain on schedule, we will need the [client's] signoff on this document by **Friday, December 23rd**.

Please sign, date, and return this page via fax to (202) 777-1179.

[CLIENT] Authorized Representative:

Printed Name

Title

Signature

Date

2 Design Requirements

As noted during the discussion, the scope of this project focuses on the body map template design, body map illustrations, and icons for the health topics page.

2.1 Body Map Specifications

2.1.1 Template Interface

The body map Flash template will be based on the prototype that Lucidea finalized in September 2005, with the following changes:

1. Left column with links may be eliminated.
2. Instructions may be made more prominent as needed. Current instructions say, “Click on a body part to see related topics.”
3. Some illustration elements will be grouped so that clicking on one body part highlights a larger area. In that context, the topic pages that display will relate to all elements within that larger area.
4. Some labels will be added that are not clickable, as pages for that topic do not currently exist. Lucidea will design a graphical treatment to ensure that the clickable links look different from the nonclickable ones.
5. As discussed, English and Spanish body maps will appear on separate pages, so Lucidea does not need to design a Spanish/English selection interface.

After this template interface has been finalized, Lucidea will provide the specifications for the image dimensions and fonts to the illustrator.

2.1.2 List of Illustrations

Lucidea will provide vector illustrations for the following systems:

1. Blood, Heart, and Circulation
2. Bones, Joints, and Muscles
3. Brain and Nervous System
4. Digestive System
5. Ear, Nose, and Throat
6. Endocrine System (Hormones)
7. Eyes and Vision
8. Immune System
9. Kidneys and Urinary System
10. Lungs and Breathing
11. Mouth and Teeth
12. Reproductive System (Female)
13. Reproductive System (Male)
14. Skin, Hair, and Nails

2.1.3 Illustration Style

The illustrations should follow these stylistic guidelines:

1. No “photo-realistic” illustrations

2. Simple, representative organs/body parts with a “3-D” appearance
3. No identifiable gender, except when necessary and specified in the Appendix, such as on the reproductive system images
4. No realistic skin tone, prefer blue/grey outline for body (samples provided in Appendix)
5. No unnecessary details; for instance, no facial features, no nipples, etc.
6. Consistent look and feel across all of the illustrations for color scheme, style, and level of detail.

2.1.4 Final Deliverable Format of Body Maps

1. Lucidea will make the approved interface changes to the Flash version of the body map.
2. Lucidea will create a single template Flash movie for one of the illustrations, containing the artwork, working highlight link layer, and placeholder frames for the html links. The same template can be used for all of the other Flash movies. We will provide an English-only version; our recommendation is that the English and Spanish movies be created as separate files.
3. The final illustrations will be delivered in layered Illustrator files.
4. Each Illustrator file will contain an editable highlight layer.
5. Each Illustrator file will contain an editable text layer.
 - a. Lucidea will provide the font specifications to [CLIENT].
 - b. The text will be provided in English and Spanish.
6. Using the template described in item 2, [CLIENT] will create the additional body maps and populate them with the content from the Illustrator files.

2.2 Icon Specifications

2.2.1 Icons to be Edited

Lucidea will add a new color scheme, and design a rollover treatment for, the following pre-existing icons from the Health Topics page:

1. Brain and Nervous System
2. Digestive System
3. Ear, Nose, and Throat
4. Endocrine System (Hormones)
5. Eyes and Vision
6. Heart and Circulation
7. Kidneys and Urinary System
8. Lungs and Breathing
9. Mouth and Teeth

2.2.2 New Icons

Lucidea will design the following new icons and also apply the color scheme and rollover treatment. **The items in parentheses are only conceptual suggestions, not requirements by [CLIENT]:**

1. Bones, Joints and Muscles: please use simplified bone (like a dog bone)
2. Skin, Hair and Nails: please use a simple hand image
3. Immune System: please create hypodermic needle image
4. Male Reproductive System: man symbol like on bathroom doors
5. Female Reproductive System: woman (bathroom door)

2.2.3 Base Color Scheme

The color scheme does not need to be realistic. It should integrate the jewel-tone palette on the Health Topics page. Some purple can be retained (as a frame for example).

2.2.4 Rollover Color Scheme

There are no requirements for the rollover color scheme. [CLIENT] is open to suggestions.

2.2.5 Final Deliverable Format of Icons

The approved icons will be delivered in two formats:

1. Web-ready (either GIFs or JPEGs)
2. Vector Illustrator files

3 Body Part Specifications and Illustration Examples for Body Image Maps

[CLIENT] sent this document to Lucidea on December 20, 2005. There were some questions about which organs to include for certain body maps. Our recommendations have been added in yellow highlight to this document.

Approval of the requirements includes approval of the body part listings included in the appendix. We understand that the names of the body parts might change slightly during future revision cycles, but the body parts themselves will not.

Re: Body Part Specifications and Illustration Examples for Body Image Maps

This document specifies the body parts to be included in each illustration. Desired text labels are provided in both English and Spanish.

Under the Brain and Nervous System section we've provided health topic mappings. The longest list of health topics (40) is mapped from the brain. The spinal cord mapping (8) is typical of many body parts in many of the systems. The shortest list for any given body part would be a mapping to only 1 health topic.

Illustrations Requested:

1. Blood, Heart, and Circulation
2. Bones, Joints, and Muscles
3. Brain and Nervous System
4. Digestive System
5. Ear, Nose, and Throat
6. Endocrine System (Hormones)
7. Eyes and Vision
8. Immune System
9. Kidneys and Urinary System
10. Lungs and Breathing
11. Mouth and Teeth
12. Reproductive System (Female)
13. Reproductive System (Male)
14. Skin, Hair, and Nails

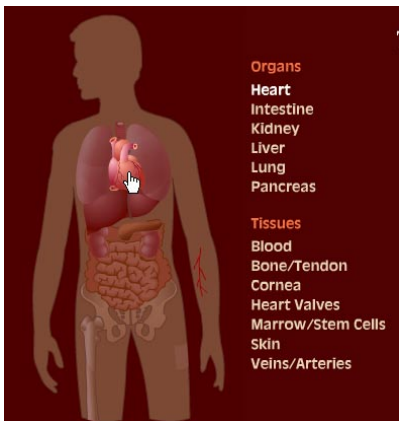
Style Issues: (Already discussed with Lucidea/illustrator)

- A. We do not want "photo-realistic" illustrations
- B. Prefer simple, representative organs/body parts with a "3-D" appearance
- C. No identifiable gender, except when necessary and specified below, such as on the reproductive system images
- D. No realistic skin tone, prefer blue/grey outline for body (samples provided below)
- E. No unnecessary details; for instance, no facial features, no nipples, etc.
- F. Consistent look and feel across all of the illustrations; consistent color scheme, style, overall level of detail, etc.

G. Map #1: Blood, Heart, and Circulation — Sangre, corazón y circulación

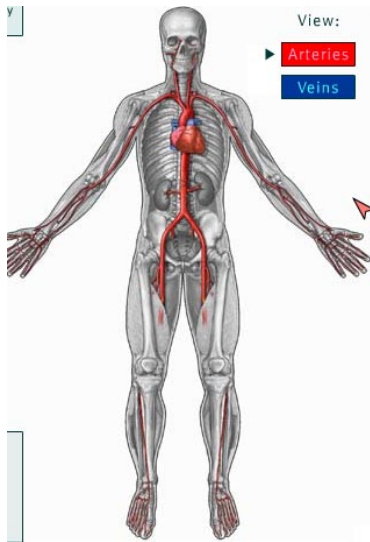
Clickable outline grouping	Body Part	English Label	Spanish Label
1	Blood	Blood	Sangre
2	Heart	Heart	Corazón
Callout?	Aorta	Aorta	Aorta
Callout?	Coronary Artery	Coronary Artery	Arteria coronaria
Callout?	Valves	Valves	Válvulas
Callout?	Pulmonary Artery	Pulmonary Artery	Arteria pulmonaria
3	Arteries	Arteries	Arterias
4	Veins	Veins	Venas

- a. Suggestions from [CLIENT]. Note these are only suggestions; suggestions from illustrator/Lucidea are welcome.
- b. Illustration should be a full body or ¾ body.
 - i. Suggest dividing the body vertically, one side displays arteries, the other side displays veins
 - ii. If including aorta/coronary artery/valves/pulmonary artery consider adding a callout to an enlarged image of the heart
- c. Examples:



- What we like:
- Full body outline
 - Body parts/organs in “3-D”
 - No specified sex or ethnicity
 - Simplified organs – almost iconic or representative, rather than realistic
 - One option for displaying blood and making it clickable

<http://www.organtransplants.org/understanding/>



What we like:

- Full body
- Grey/Blue color
- No specified gender
- Simplified body parts

What we don't like:

- Too much skeletal and muscular detail

http://www.pennhealth.com/health_info/body_guide/

Map #2: Bones, Joints, and Muscles — Huesos, articulaciones y músculos

Clickable outline grouping	Body Part	English Label	Spanish Label
1	Bone	Bones	Huesos
2	Joints	Joints	Articulaciones
*	Skull*	Skull	Cráneo
3	Neck	Neck	Cuello
	Spine	Spine	Espinal
	Tailbone	Tailbone	Coxis
4	Hip/Pelvis	Hip	Cadera
	Legs	Leg	Pierna
	Knees	Knee	Rodilla
	Feet	Foot	Pie
	Ankles	Ankle	Tobillo
	Heels	Heel	Talón
	Toes	Toe	Dedo del pie
5	Shoulder	Shoulder	Hombro
	Elbow	Elbow	Codo
	Arms	Arm	Brazo
	Wrists	Wrist	Muñeca
	Hands	Hand	Mano
6	Muscles	Muscles	Musculares

[CLIENT] suggests (just our idea, not a requirement) on image below:

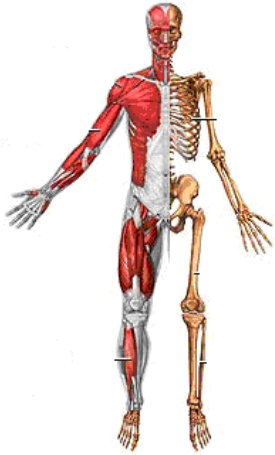
Bone label points rib cage

Muscle label points to chest and thigh areas

Joints label points to wrist and knee (on left hand side of image)

*Skull should be an identified body part. However, we do not have any topics associated with it at this time. Therefore, it will not be clickable.

- a. Illustration should be a full body or 3/4
 - i. Suggest dividing the body vertically, one side showing skeleton (bones) and joints and the other side showing muscles
 - ii. Should have the ability to click on the whole skeleton and then specific regions/bones
 - iii. Will not label specific muscles, clicking on any muscle or area of the muscle system will highlight all of the muscles in the illustration
- b. Example:



What we like:

- Vertical split allowing bones and muscles to display on the same body map

What we don't like:

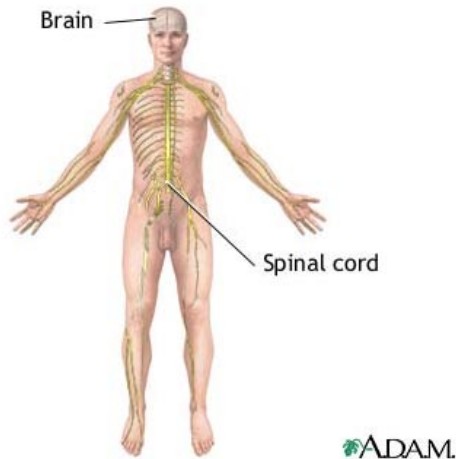
- Maybe a bit too detailed, could be more representative and less realistic

Created from: [http://www.\[CLIENT\].nih.gov/medlineplus/ency/imagepages/9678.htm](http://www.[CLIENT].nih.gov/medlineplus/ency/imagepages/9678.htm)
and [http://www.\[CLIENT\].nih.gov/medlineplus/ency/imagepages/9065.htm](http://www.[CLIENT].nih.gov/medlineplus/ency/imagepages/9065.htm)

Map #3: Brain and Nervous System — Cerebro y sistema nervioso

Clickable outline grouping	Body Part	English Label	Spanish Label
1	Brain	Brain	Cerebro
2	Spinal Cord	Spinal Cord	Médula espinal
3	Nerves	Nerve	Nervio

- Illustration should be a full body, including brain and nerves running all the way down legs
- Examples:



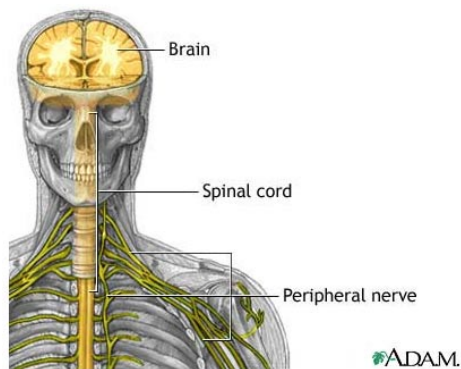
What we like:

- Relatively simple network of nerves, not too detailed
- Full body

What we don't like:

- Facial details
- Specific skin color
- Reproductive anatomy

[http://www.\[CLIENT\].nih.gov/medlineplus/ency/imagepages/9693.htm](http://www.[CLIENT].nih.gov/medlineplus/ency/imagepages/9693.htm)



What we like:

- Grey/Blue color
- Spinal cord in the foreground

What we don't like:

- Skeletal detail

[http://www.\[CLIENT\].nih.gov/medlineplus/ency/imagepages/18125.htm](http://www.[CLIENT].nih.gov/medlineplus/ency/imagepages/18125.htm)

- c. Currently the brain is the body part for which we've mapped the greatest number of topics (40). Here is the list in English & Spanish:

Brain	cerebro
English Health Topic	Spanish Health Topic
Alzheimer's Disease	3.1.1 Enfermedad de Alzheimer
Amyotrophic Lateral Sclerosis	3.1.2 Esclerosis lateral amiotrófica
Aphasia	3.1.3 Afasia
Ataxia Telangiectasia	No Spanish health topic page
Attention Deficit Disorder with Hyperactivity	3.1.4 Trastorno por déficit de atención con hiperactividad
Brain Cancer	3.1.5 Cáncer de cerebro
Brain Diseases	3.1.6 Enfermedades del cerebro
Cerebral Palsy	3.1.7 Parálisis cerebral
Childhood Brain Tumors	3.1.8 Tumores cerebrales en niños
3.1.9 Creutzfeldt-Jakob Disease	3.1.10 Enfermedad de Creutzfeldt-Jakob
Dementia	Demencia
Dizziness and Vertigo	3.1.11 Mareo y vértigo
Dystonia	3.1.12 Distonía
Encephalitis	3.1.13 Encefalitis
Epilepsy	3.1.14 Epilepsia
Genetic Brain Disorders	3.1.15 Trastornos cerebrales genéticos
Head and Brain Injuries	3.1.16 Traumatismo cerebral y traumas en la cabeza
Head and Brain Malformations	3.1.17 Malformaciones del cerebro y del cráneo
Headache	3.1.18 Dolor de cabeza
Huntington's Disease	3.1.19 Enfermedad de Huntington
Hydrocephalus	3.1.20 Hidrocefalia
Leukodystrophies	3.1.21 Leucodistrofias
Lewy Body Disease	No Spanish health topic page
Memory	3.1.22 Memoria
Migraine	3.1.23 Migraña
Movement Disorders	3.1.24 Trastornos de movimiento
Neurological Diseases	3.1.25 Enfermedades neurológicas
Neuromuscular Disorders	3.1.26 Enfermedades neuromusculares
Progressive Supranuclear Palsy	3.1.27 Parálisis supranuclear progresiva
Seizures	3.1.28 Convulsiones
Sleep Disorders	3.1.29 Problemas del sueño
Speech and Communication Disorders	3.1.30 Problemas del habla y de la comunicación
Stroke	3.1.31 Ataque cerebral
Stuttering	3.1.32 Tartamudez
Tay-Sachs Disease	3.1.33 Enfermedad de Tay-Sachs
Tourette Syndrome	3.1.34 Síndrome de Tourette
Transient Ischemic Attack	3.1.35 Ataque isquémico transitorio
Tremor	3.1.36 Temblor
Tuberous Sclerosis	3.1.37 Esclerosis tuberosa
Wilson's Disease	3.1.38 Enfermedad de Wilson

The mapping of the Spinal Cord is “typical” of many of the other body parts in the various systems – 8 topics are mapped. Here is the list in English & Spanish:

Spinal Cord	médula espinal
English Health Topic	Spanish Health Topic
Meningitis	3.1.39 Meningitis
Multiple Sclerosis	3.1.40 Esclerosis múltiple
Polio and Post-Polio Syndrome	3.1.41 Polio y síndrome de post-polio
Spina Bifida	3.1.42 Espina bífida
Spinal Cord Diseases	3.1.43 Enfermedades de la médula espinal
Spinal Cord Injuries	3.1.44 Traumatismo de la médula espinal
Spinal Muscular Atrophy	3.1.45 Atrofia muscular espinal
Syringomyelia	3.1.46 Siringomielia

d. The longest topic name in English has 45 characters (including spaces). Example:

Attention Deficit Disorder with Hyperactivity

e. The shortest health topic names in English have 3 characters. Examples:

CPR
Flu
HPV

f. The longest topic names in Spanish have appx. 50 characters (including spaces). Example:

Problemas de los riñones asociados con la diabetes

g. The shortest health topic names in Spanish have 3 characters. Example:

RCP
Tos
VPH

Map #4: Digestive System — Sistema digestivo

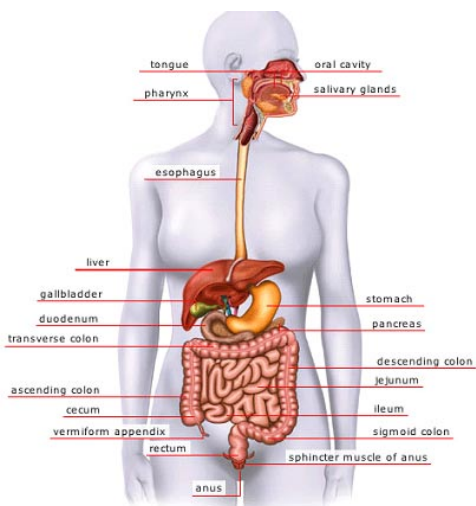
[CLIENT] removed “whole” system – we can force topics into other body part areas

Clickable outline grouping	Body Part	English Label	Spanish Label
1	Esophagus	Esophagus	Esófago
2	Liver	Liver	Hígado
3	Gallbladder	Gallbladder	Vesícula biliar
4	Stomach	Stomach	Estómago
5	Pancreas	Pancreas	Páncreas
6	Large Intestine	Large Intestine	Intestino grueso
7	Small Intestine	Small Intestine	Intestino delgado
*	Appendix	Appendix	Apéndice
8	Rectum	Rectum	Recto
	Anus	Anus	Ano

* [CLIENT] would like the medical illustrator to suggest how to include the appendix. Currently MedlinePlus only has one topic associated with this body part.

Illustrator will include appendix in his sketches.

- a. Illustration should be a partial body – top of shoulders to mid-thighs, to show esophagus through anus
- b. Examples:



What we like:

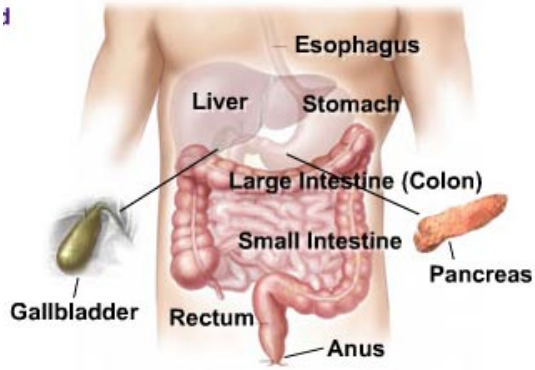
- Grey/Blue color with bright colored body parts
- 3-D body parts
- Simplified rather than detailed organs
- Arms provide context

What we don't like:

- Clearly a woman, would prefer no gender distinction
- Labelina v. detailed. we would

http://www.oxfordreference.com/media/images/9346_0.jpg

1



What we like:

- Clear labels
- Call-outs for organs that would otherwise be obstructed from view
- Arms provide context

What we don't like:

- Specific skin tone

Map #5: Ear, Nose, and Throat—Oído, nariz y garganta)

Clickable outline grouping	Body Part	English Label	Spanish Label
1	Ear	Ear	Oído
2	Nose	Nose	Nariz
*	Sinuses (maybe)	Sinuses	Senos
3	Throat	Throat	Garganta

* [CLIENT] would like the medical illustrator to suggest how to include the sinuses (or whether to include at all). Currently MedlinePlus only has one topic associated with this body part.

Illustrator will include the sinuses by "ghosting" them into the illustration.

- a. Illustration should be a partial body - full head through top of shoulders
 - i. Can be very simple, not many body parts to identify/draw
- b. Examples:



What we like:

- Basic headshot

What we don't like:

- Photograph, would like a much more generic illustration with grey/blue skin and unspecified gender

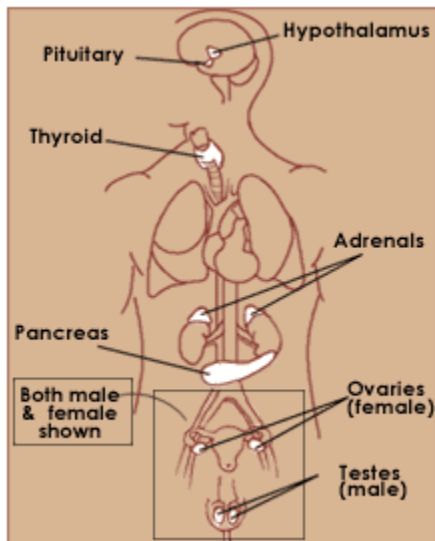
Map #6: Endocrine System (Hormones) — Sistema endocrino (hormonas)

Clickable outline grouping	Body Part	English Label	Spanish Label
1	Adrenal Gland	Adrenal Gland	3.1.47 Glándula suprarrenal
2	Pancreas	Pancreas	Páncreas
3	Pituitary Gland	Pituitary Gland	Hipófisis
4	Thyroid Gland	Thyroid Gland	Glándula tiroides
5	Ovaries	Ovary	Ovario
6	Testes	Testicle	Testículo

[CLIENT] did not include hypothalamus or parathyroid glands as we have no topics associated. We welcome suggestion of medical illustrator as to whether these should be included in the illustration or not. **Yes, we will include these body parts.**

Male/Female call out: We've noticed most images use a call out for either the male or the female testes/ovaries. We think this works well.

- Illustration should be a partial body – from mid-thigh through top of head
- Can create one illustration, but will need an inset of male/female, see example
- Example:



What we like:

- Simple outline
- Inset of male/female so both are pictured on the same illustration

What we don't like:

- Would prefer 3-D
- Would prefer more color variety
- No need to include extra body parts not pertinent to the Endocrine system

http://kidshealth.org/parent/general/body_basics/endocrine.html

Map #7: Eyes and Vision — Ojos y visión

Clickable outline grouping	Body Part	English Label	Spanish Label
1	Cornea	Cornea	Córnea
	Lens	Lens	Cristalino
	Retina	Retina	Retina
*	Optic Nerve	Optic Nerve	Nervio óptico
*	Iris	Iris	
*	Sclera	Sclera	

[CLIENT] does have many topics that do not truly belong to one part (eye cancer, eye diseases, vision loss and blindness). Would welcome suggestion from illustrator how we might include a “general eye” clickable area. If there is no good way, we can force those topics into other areas. The issue is that clickable areas in Flash cannot overlap.

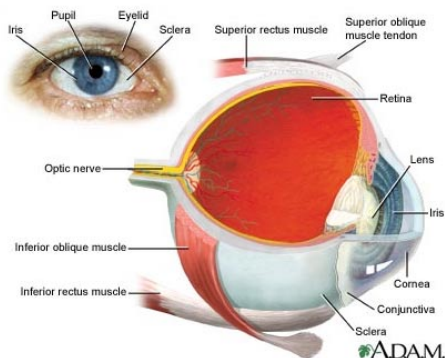
We can include a bracket that pops up on the side to include the entire image. It’s possible that we could also insert a highlight over the entire eye at that point, but it may not be advisable as users would assume the highlight = clickable area. We need to check on the technical specs with our Flash developer in early January.

[CLIENT] welcomes suggestions for additional labeled parts of the eye. We currently have topics associated only with eyes, cornea, lens and retina.

We recommend showing a true cross-section of the eye and not the full frontal version (as appears in the upper left corner of the sample illustration). We will include the iris and sclera. We may show the muscles but will not label them, as the goal is to show the eye, not the mechanics of the eye.

*Optic nerve should be an identified body part. However, we do not have any topics associated with it at this time. Therefore it will not be clickable.

- a. Illustration should be just the eye
- b. Example:



What we like:

- Focus on the eye, no extra body parts
- Exterior and internal cross-section views

What we don't like:

- Prefer a more simplified illustration

[http://www.\[CLIENT\].nih.gov/medlineplus/ency/imagepages/1094.htm](http://www.[CLIENT].nih.gov/medlineplus/ency/imagepages/1094.htm)

Map #8: Immune System — Sistema inmunológico

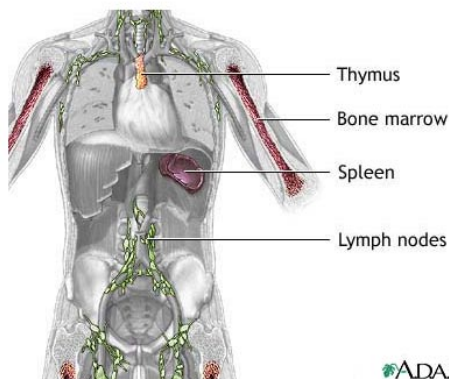
Clickable outline grouping	Body Part	English Label	Spanish Label
1	Immune system (general)	Immune system (general)	Sistema inmunológico
2	Lymph Nodes	Lymph Node	Ganglios Linfáticos
3	Thymus	Thymus	Timo
4	Spleen	Spleen	Bazo
5	Bone Marrow	Bone Marrow	Médula ósea
6	Tonsils	Tonsil	Amígdala
*	Adenoids	Adenoid	Adenoid

[CLIENT] would like to suggest the split body image with lymph nodes through adenoids identified on one half of the image. Other half could be “immune system general” clickable area. We really do need this for our AIDS/HIV topics . Other suggestions welcome.

Our illustrator agrees with this suggestion.

*Adenoids should be an identified body part. However, we have no topics associated with it at this time. Therefore, it will not be clickable.

- a. Illustration should be a 3/4 body with head
- b. Example:



What we like:

- Relevant body parts are in color, the rest of the illustration is greyed out

What we don't like:

- Too much detail in skeleton and irrelevant body parts

[http://www.\[CLIENT\].nih.gov/medlineplus/ency/imagepages/8932.htm](http://www.[CLIENT].nih.gov/medlineplus/ency/imagepages/8932.htm)

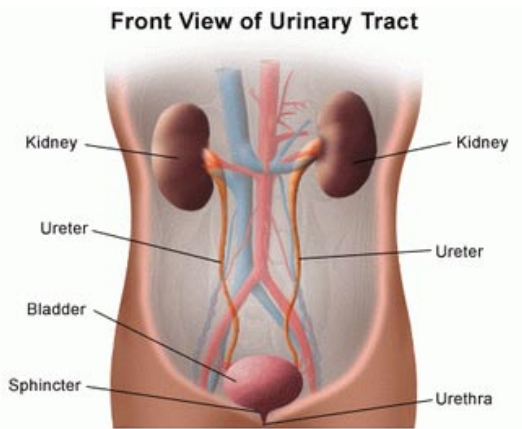
Map #9: Kidneys and Urinary System — Riñones y sistema urinario

[CLIENT] has removed “urinary system general.” We will force topics associated with that group into other areas.

Clickable outline grouping	Body Part	English Label	Spanish Label
1	Kidneys	Kidney	Riñon
*	Ureters	Ureter	Uréter
2	Bladder	Bladder	Vejiga
*	Urethra	Urethra	Uretra

*Ureters and Urethra should be identified body parts. However, we have no topics associated with them at this time. Therefore, they will not be clickable.

- a. Illustration should be a partial body
- b. Example:



What we like:

- Simple representation of organs
- No gender identification
- No unnecessary detail

What we don't like:

- Prefer grey/blue color for skin

<http://www.childrenscentralcal.org/content.asp?id=1005&parent=1>

Map #10: Lungs and Breathing — Pulmón y vías respiratorias

[CLIENT] removed “respiratory system – whole”

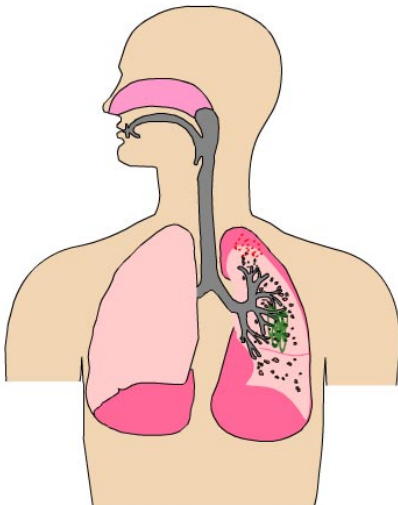
Clickable outline grouping	Body Part	English Label	Spanish Label
1	Lungs	Lung	Pulmón
2	Bronchi	Bronchus	bronquio
3	Trachea	Trachea	Tráquea
	Pharynx	Pharynx	Faringe
	Larynx	Larynx	Laringe
4	Pleura	Pleura	
5	Nasal cavity	Nasal cavity	
*	Alveoli	Alveoli	
*	Diaphragm	Diaphragm	

*Trachea, pharynx, and larynx should be identified body parts. However, we have no topics associated with them at this time. Therefore, they will not be clickable.

[CLIENT] welcomes suggestions from medical illustrator – especially with regard to parts such as: nasal cavity, alveoli, and diaphragm.

We will include the nasal cavity, alveoli, and diaphragm. Since we are including the nasal cavity, we'll also show the oral cavity, to demonstrate all the places where air can enter.

- a. Illustration should be a partial body – from the waist through the top of the head
- b. Example:



What we like:

- Simple representation of organs
- No gender identification
- No unnecessary detail

What we don't like:

- Prefer grey/blue color for skin
- Prefer 3-D illustration
- Show more of the arms for context

[http://www.\[CLIENT\].nih.gov/medlineplus/tutorials/influenza/htm/ no_50_no_0.htm](http://www.[CLIENT].nih.gov/medlineplus/tutorials/influenza/htm/ no_50_no_0.htm)

Map #11: Mouth and Teeth — Boca y dientes

Clickable outline grouping	Body Part	English Label	Spanish Label
1	Lips	Lips	
2	Gums	Gum	Encía
3	Tonsils	Tonsil	Amígdala
4	Soft Palate	Soft Palate	Paladar blando
	Hard palate	Hard Palate	
	Uvula	Uvula	Úvula
5	Teeth	Tooth	Diente
6	Tongue	Tongue	Lengua

[CLIENT] changed whole mouth to Lips, removed salivary glands

[CLIENT] would like suggestions from medical illustrator on including salivary glands. MedlinePlus has one topic on salivary glands. However we don't want an ugly(!) picture just to accommodate one topic.

We don't recommend showing the saliva glands. It would be impossible to show them well without providing multiple views, which could be confusing to a lay audience.

Tonsils we have under immune system, but wonder if they should be identified on this map as well.

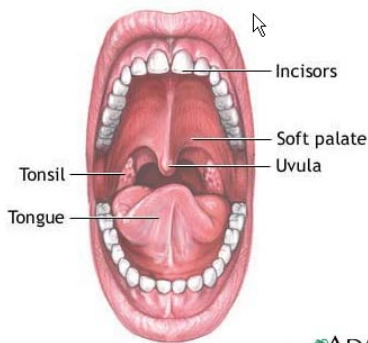
Yes, we will include them.

* Tongue should be an identified body part. However, we have no topics associated with it at this time. Therefore, it will not be clickable.

a. Illustration should be a partial body –

i. Could use same illustration as Ear, Nose, and Throat but label different parts?

b. Example:



ADAM

What we like:

- No gender identification
- No unnecessary detail

What we don't like:

- Could consider showing in the context of the whole head/face?

[http://www.\[CLIENT\].nih.gov/medlineplus/ency/imagepages/8880.htm](http://www.[CLIENT].nih.gov/medlineplus/ency/imagepages/8880.htm)

Map #12: Reproductive System (Female) — Sistema reproductor (femenino)

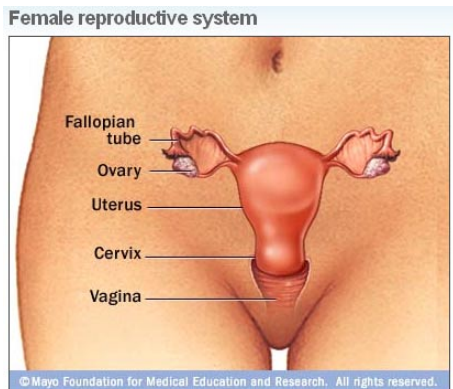
Clickable outline grouping	Body Part	English Label	Spanish Label
1	Reproductive (general)	Reproductive (general)	Sistema reproductiva femenina
2	Vagina	Vagina	Vagina
3	Uterus	Uterus	Útero
4	Ovaries	Ovary	Ovario
*	Fallopian tubes	Fallopian tubes	
5	Cervix	Cervix	Cuello uterino
6	Breasts	Breast	Mama/Seno

[CLIENT] would like to identify individual parts (vagina, uterus, ovaries, fallopian tubes, etc) on one side. Like image below then have other half clickable as “Female Reproductive system general” for our general topics of pregnancy, abortion, birth control, etc. Other suggestions welcome.

We can include a bracket that pops up on the side to include the entire image. It’s possible that we could also insert a highlight over the entire system at that point, but it may not be advisable as users would assume the highlight = clickable area. We need to check on the technical specs with our Flash developer in early January.

* Fallopian tubes should be an identified body part. However, we have no topics associated with them at this time. Therefore it will not be clickable.

- a. Illustration should be a partial body – from top of thighs through shoulder, to include breasts
- b. Example:



© Mayo Foundation for Medical Education and Research. All rights reserved.

<http://www.mayoclinic.com/health/endometriosis/DS00289>

What we like:

- No unnecessary detail

What we don't like:

- Prefer grey/blue skin with colored organs
- Need to show more of the body to include breasts

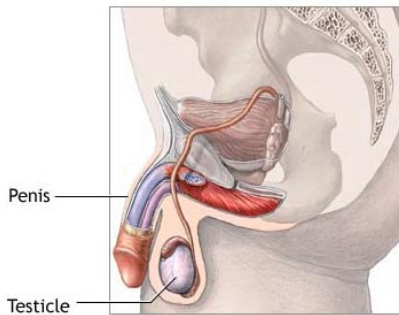
Map #13: Reproductive System (Male) — Sistema reproductor (masculine)

[CLIENT] removed “Male Reproductive system” general – we can force our topics into other parts of male system.

Clickable outline grouping	Body Part	English Label	Spanish Label
1	Penis	Penis	Pene
2	Testes	Testicle	Testículo
3	Prostate	Prostate	Próstata
*	Vas deferenes		
*	Scrotum		

* Vas deferenes and scrotum should be identified body parts however we have no topics associated with them at this time. Therefore it will not be clickable.

- a. Illustration should be a partial body – from top of thighs through hips
- b. Examples:



ADAM.

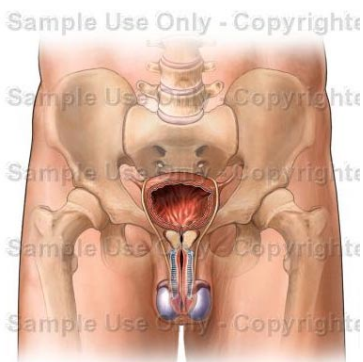
What we like:

- Blue/grey skin color

What we don't like:

- May need to show more of the body to include breasts/chest

[http://www.\[CLIENT\].nih.gov/medlineplus/ency/imagepages/9658.htm](http://www.[CLIENT].nih.gov/medlineplus/ency/imagepages/9658.htm)



What we like:

-

What we don't like:

- Prefer grey/blue skin with colored organs
- May need to show more of the body to include breasts/chest
- Too much skeletal detail

<http://catalog.nucleusinc.com/imagescooked/5492W.jpg>

Map #14: Skin, Hair, and Nails — Piel, cabello y uñas

Clickable outline grouping	Body Part	English Label	Spanish Label
1	Skin	Skin	Piel
2	Hair	Hair	Pelo
3	Nails	Nail	Uña

Any suggestions for greater detail, lesser detail, labeled parts, etc. is welcome. Skin, hair and nails are the only “parts” with MedlinePlus topics and 95% of those are associated with skin.

Illustration should be head with hair and then maybe the arms folded over the chest to show skin

The illustrator recommends a different approach: a profile of a person with their hand in their hair. See the example below. We are proposing a side view rather than a ¾ view as pictured.



a. Examples:



What we like:

- Includes all of the desired body parts

What we don't like:

- Would not use a photograph

<http://www.yourgreatskin.com/dermatology.html>